



GRITTGEAR®

TOUGH GRITT | COMFORT FITT™



SAFETY BOOTS



www.grittgear.co.za



CLASSIFICATION

S1:

- STEEL TOE CAP WITH IMPACT PROTECTION OF 200 JOULES
- SAFETY BASIC
- CLOSED SEAT REGION
- ANTISTATIC
- ENERGY ABSORPTION OF SEAT REGION
- FUEL OIL RESISTANT OUTSOLES

S1P:

- STEEL TOE CAP WITH IMPACT PROTECTION OF 200 JOULES
- STEEL MIDSOLE
- SAFETY BASIC
- CLOSED SEAT REGION
- ANTISTATIC
- ENERGY ABSORPTION OF SEAT REGION
- FUEL OIL RESISTANT OUTSOLES
- WATER RESISTANT OF UPPER

S3:

- STEEL TOE CAP WITH IMPACT PROTECTION OF 200 JOULES
- STEEL MIDSOLE
- SAFETY BASIC
- CLOSED SEAT REGION
- ANTISTATIC
- ENERGY ABSORPTION OF SEAT REGION
- FUEL OIL RESISTANT OUTSOLES
- WATER RESISTANT OF UPPER
- PENETRATION RESISTANT OF OUTSOLE
- CLEATED OUTSOLE

DOLOMITE

SPLIT COW LEATHER

SPECIFICATIONS:

Lining: Air Mesh

Sole: Dual density Polyurethane with aesthetically designed dual colour outsole;
Shock absorber; Extra grip
Oil resistant; Antistatic and Slip resistant

Eyelets: Metal loop eyelets

Insole: Infused foam; Antistatic
Removeable sock

Upper: Steel toe cap with impact Protection of 200 joules; Reflector tape

COLOURS: BLACK

SIZES: 3-13



MAGNESITE

SPLIT COW LEATHER

SPECIFICATIONS:

Lining: Air Mesh

Sole: Dual density Polyurethane with aesthetically designed dual colour outsole;
Shock absorber; Extra grip
Oil resistant; Antistatic and Slip resistant

Eyelets: Metal loop eyelets

Insole: Infused foam; Antistatic
Removeable sock

Upper: Steel toe cap with impact Protection of 200 joules

COLOURS: BLACK

SIZES: 3-13



NRCs



MANGANO

SMOOTH COW LEATHER

SPECIFICATIONS:

Lining: Air Mesh

Sole: Dual density Polyurethane with aesthetically designed dual colour outsole;
Shock absorber; Extra grip
Oil resistant; Antistatic and Slip resistant

Insole: Infused foam; Antistatic
Removeable sock

Upper: Steel toe cap with impact Protection of 200 joules

COLOURS: BLACK

CHOCOLATE

SIZES: 3-13



MANGANO

SMOOTH COW LEATHER

SPECIFICATIONS:

Lining: Air Mesh

Sole: Dual density Polyurethane with aesthetically designed dual colour outsole;
Shock absorber; Extra grip
Oil resistant; Antistatic and Slip resistant

Insole: Infused foam; Antistatic
Removeable sock

Upper: Steel toe cap with impact Protection of 200 joules

COLOURS: BLACK

CHOCOLATE

SIZES: 3-13





QUARTZ

SMOOTH COW LEATHER

SPECIFICATIONS:

Lining: Air Mesh; Comfort Collar

Sole: Dual density Polyurethane with aesthetically designed dual colour outsole;
Shock absorber; Extra grip
Oil resistant; Antistatic; Steel
Midsole and Slip resistant

Eyelets: Metal hole + Hooks

Insole: Infused foam; Antistatic
Removeable sock

Upper: Steel toe cap with impact Protection of 200 joules

COLOURS: BLACK

CHOCOLATE

SIZES: 3-13



QUARTZ

SMOOTH COW LEATHER

SPECIFICATIONS:

Lining: Air Mesh; Comfort Collar

Sole: Dual density Polyurethane with aesthetically designed dual colour outsole;
Shock absorber; Extra grip
Oil resistant; Antistatic; Steel Midsole and Slip resistant

Eyelets: Metal hole + Hooks

Insole: Infused foam; Antistatic
Removeable sock

Upper: Steel toe cap with impact Protection of 200 joules

COLOURS: BLACK

CHOCOLATE

SIZES: 3-13



SLATE

CRAZY HORSE LEATHER

SPECIFICATIONS:

Lining: Air Mesh; Comfort Collar

Sole: Dual density Polyurethane;
Rubber outer sole;
Kevlar mid sole; Steel toe cap with impact Protection of 200 joules; Up to 300 degrees heat resistant; Slip resistant; Oil resistant and Bull nose

Insole: Antstatic **Supreme comfort** infused foam sock

Upper: Water resistant; Heat resistant

COLOURS: BLACK

CHOCOLATE

SIZES: 5-13



SLATE

CRAZY HORSE LEATHER

SPECIFICATIONS:

Lining:	Air Mesh; Comfort Collar
Sole:	Dual density Polyurethane; Rubber outer sole; Kevlar mid sole ; Steel toe cap with impact Protection of 200 joules; Up to 300 degrees heat resistant; Slip resistant; Oil resistant and Bull nose
Insole:	Antstatic Supreme comfort infused foam sock
Upper:	Water resistant; Heat resistant
COLOURS:	BLACK CHOCOLATE
SIZES:	5-13



SLATE

LEATHER

SPECIFICATIONS:

Lining: Air Mesh; Comfort Collar

Sole: Dual density Polyurethane;
Rubber outer sole;
Kevlar mid sole; Steel toe cap with impact Protection of 200 joules; Up to 300 degrees heat resistant; Slip resistant; Oil resistant and Bull nose

Insole: Antstatic **Supreme comfort** infused foam sock

Upper: Heat resistant

COLOURS: BLACK

SIZES: 5-13



FLINT

CRAZY HORSE LEATHER

SPECIFICATIONS:

Lining:	Air Mesh; Comfort Collar
Sole:	Dual density Polyurethane; Rubber outer sole; Kevlar mid sole ; Steel toe cap with impact Protection of 200 joules; Up to 300 degrees heat resistant; Slip resistant; Oil resistant and Bull nose
Eyelets:	Metal hole + Hooks
Insole:	Antstatic Supreme comfort infused foam sock
Upper:	Water resistant; Includes extra lace (Black + Cyan GRITTEGEAR FLEC)
COLOURS:	BLACK CHOCOLATE
SIZES:	5-13



FLINT

CRAZY HORSE LEATHER

SPECIFICATIONS:

Lining: Air Mesh; Comfort Collar

Sole: Dual density Polyurethane;
Rubber outer sole;
Kevlar mid sole; Steel toe cap with impact Protection of 200 joules; Up to 300 degrees heat resistant; Slip resistant; Oil resistant and Bull nose

Eyelets: Metal hole + Hooks

Insole: Antstatic **Supreme comfort** infused foam sock

Upper: Water resistant; Includes extra lace
(Black + Cyan GRITTGEAR FLEC)

COLOURS: BLACK
CHOCOLATE

SIZES: 5-13





FLINT

LEATHER

SPECIFICATIONS:

Lining: Air Mesh; Comfort Collar

Sole: Dual density Polyurethane; Rubber outer sole; **Kevlar mid sole**; Steel toe cap with impact Protection of 200 joules; Up to 300 degrees heat resistant; Slip resistant; Oil resistant and Bull nose

Eyelets: Metal hole + Hooks

Insole: Antstatic **Supreme comfort** infused foam sock

Upper: Includes extra lace (Black +Cyan GRITTGEAR FLEC)

COLOURS: BLACK

SIZES: 5-13



MEDICATE

EVA RUBBER

SPECIFICATIONS:

Lining: EVA

Sole: EVA + Rubber; Water proof;
Anti Slip: Oil Resistant

Insole: Removable Anti Bacterial Sock

COLOURS: BLACK

DUAL SIZES: 2

3 - 4

5 - 6

7 - 8

9 - 10

11 - 12





SNIPER

CANVAS

SPECIFICATIONS:

Lining:	Canvas
Sole:	Dual density construction for durability and comfort; Shock absorber; Oil resistant; Antistatic and Slip resistant
Insole:	Infused foam; Antistatic Removeable sock

COLOURS: BLACK

SIZES: 4 - 12



GARNET 1

SMOOTH LEATHER

SPECIFICATIONS:

Lining: Air Mesh

Insole: Infused foam

COLOURS: BLACK

SIZES: 5 - 12



GARNET 2

SMOOTH LEATHER

SPECIFICATIONS:

Lining: Air Mesh

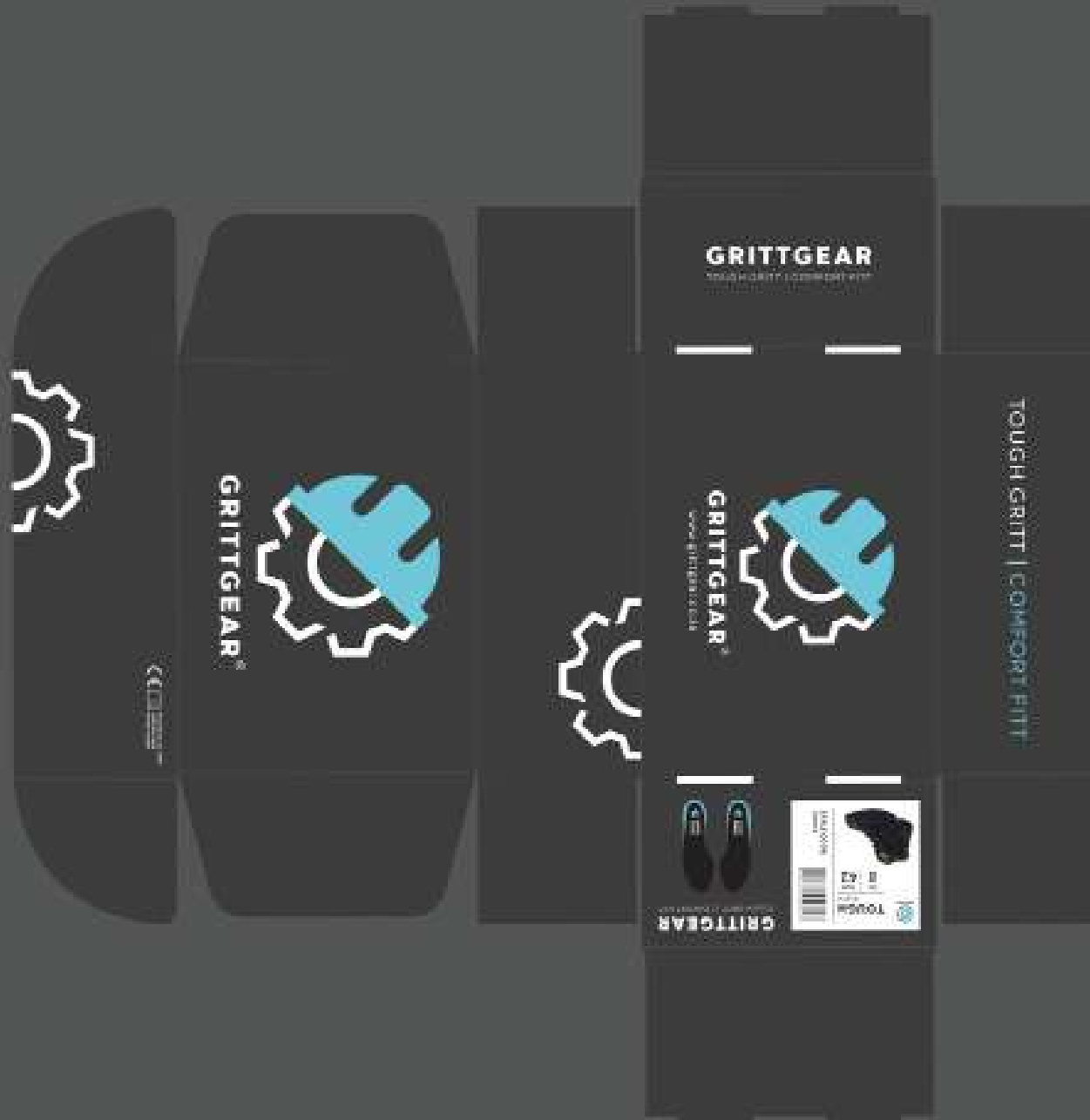
Insole: Infused foam

COLOURS: BLACK

SIZES: 5 - 12



PACKAGING



SWINGTAG



GRITTGEAR®

TOUGH GRIT | COMFORT FIT

SAFETY BOOT
Safety Boot

www.grittgear.co.uk
0447 7610000
01432 333333

CE EN ISO 20310

www.grittgear.co.uk

TOUGH GRIT		SAFETY BOOT
SAFETY BOOT		DOUBLE SEWED GOVINTS
TOUGH GRIT		FOOT PUMP
TOUGH GRIT		WATER RESISTANT
TOUGH GRIT		WATER RESISTANT
TOUGH GRIT		WATER RESISTANT
TOUGH GRIT		WATER RESISTANT
TOUGH GRIT		WATER RESISTANT
TOUGH GRIT		WATER RESISTANT
TOUGH GRIT		WATER RESISTANT

SPECIFICATIONS

GRITTGEAR®



Understanding the classification of your safety footwear will ensure that you choose a shoe or boot that offers you the ideal level of protection.

SI SAFETY SHOE

GRITTGEAR®



GRITTGEAR's PU and engineered infused foam insole offer an unbreakable, moisture-absorbing, and fast-drying foam insole, enhanced full surface support. It incorporates various other features like arch support, heel support, and an insole with technology.

INFUSED FOAM ENGINEERED FOR COMFORT

GRITTGEAR®



Understanding the slip resistance of your safety shoes and boots is crucial in avoiding workplace accidents. The GRITTGEAR's double-sew construction, reinforced sole, and various other features like arch support, heel support, and an insole with technology.

44 CERTIFIED SLIP RESISTANT

GRITTGEAR®



The infused foam insole by GRITTGEAR incorporates a steel toe cap designed to shield your feet from falling objects during work, offering impact resistance of up to 200 J.

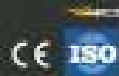
200 JOULE TOE CAP

GRITTGEAR®



S1, S1P & S3 SAFETY BOOT GUIDE

As these boots have anti-static properties, they protect workers, sensitive equipment, and components from electrostatic discharges present in generic manufacturing industries, aerospace, computer equipment manufacturing, the medical industry, and many other environments.



- Heat insulation up to 95°C
- Cleaned outside for added traction
- Energy absorption, heat for comfort
- Wider tread for extra room and grip
- Oil and slip-resistant outsole, SBC certified
- Steel insole for protection against penetration
- Impact resistant steel toe cap rated up to 200 x 4 Joules
- Steel cap for extra toe reinforcement and increased durability
- Dual-density PU lightweight outsole with anti-static technology
- Polyester pull tabs + elastic shoe gussets for easy donning and doffing
- Removable insole/last PU + Memory foam insole for superior comfort

FULL REMOVABLE MOSS: Polyurethane with memory foam.

[illegible]

These safety shoes are specifically engineered for work settings demanding heightened protection levels, such as construction sites, warehouses, and industrial facilities. Opt for 11-footwear for optimal safety, protection, and comfort throughout your daily tasks.





DANGEE | CARKEN®

FIRST IN SAFETY FOOTWEAR™

www.grittgear.co.za